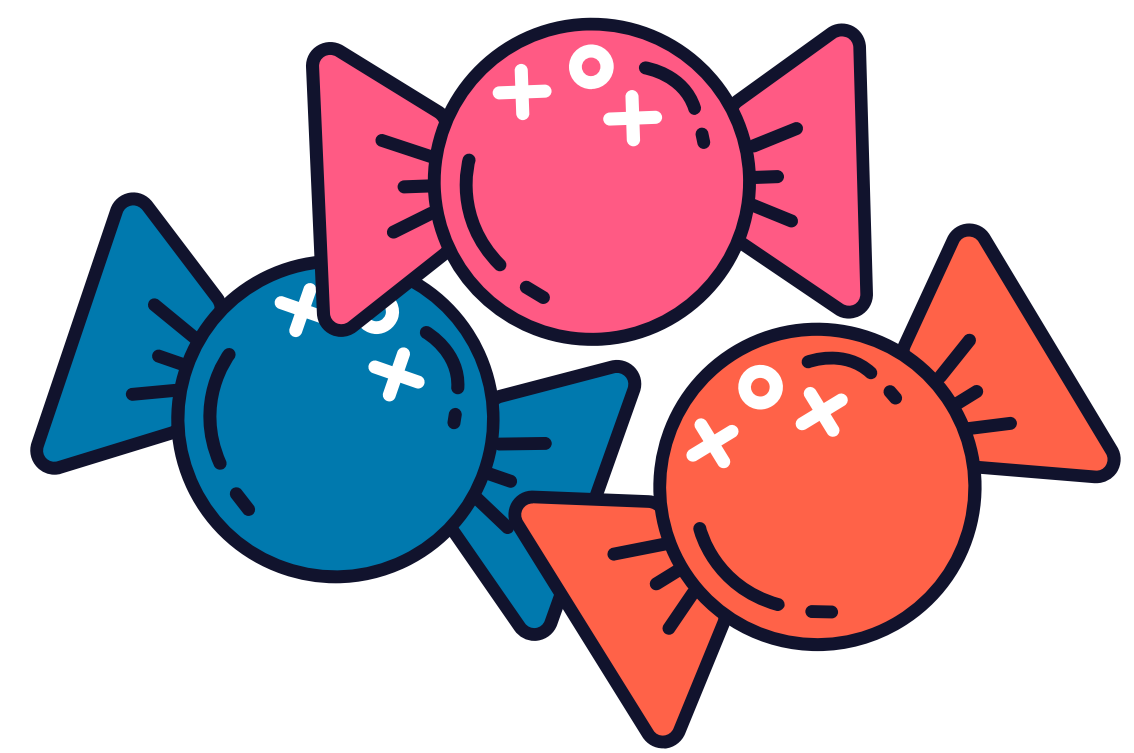


Nome:

Classe:

Data:



Divisão Doce

Dividindo por 2 e 3

$4 \div 2 =$

$8 \div 2 =$

$6 \div 2 =$

$12 \div 2 =$

$18 \div 3 =$

$20 \div 2 =$

$30 \div 2 =$

$24 \div 2 =$

$28 \div 2 =$

$32 \div 2 =$

$12 \div 3 =$

$9 \div 3 =$

$36 \div 3 =$

$15 \div 3 =$

$18 \div 3 =$

$21 \div 3 =$

$6 \div 3 =$

$24 \div 3 =$

$27 \div 3 =$

$30 \div 3 =$